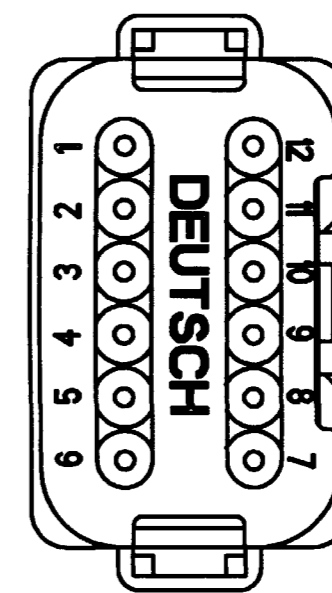
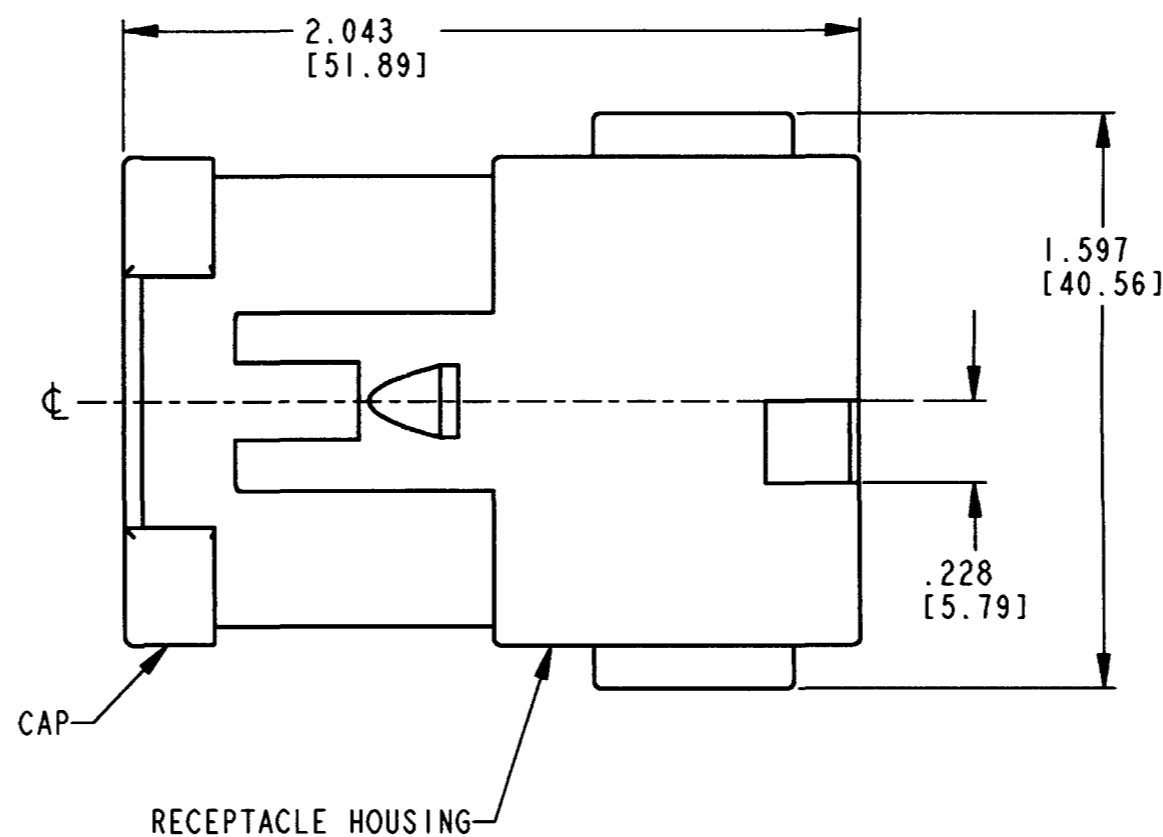
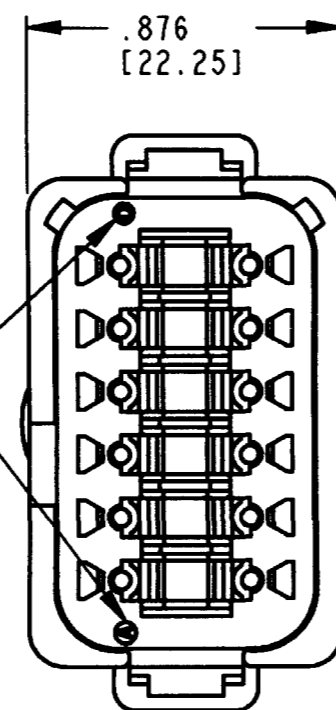


REV
A DT04-12PB-BE02

REVISIONS			
SYM	DESCRIPTION	DATE	APPROVED
NC	NEW RELEASE PER E.O. P16010	5/14/99	R.D.R
A	REVISED PER E.O. P17545	12-10-01	ADR

DATE CODE: YEAR IS REPRESENTED BY LAST NUMERICAL DIGIT. EX: 0=2000. MONTH IS REPRESENTED BY SEQUENTIAL ALPHA CHARACTERS. EX: A=JANUARY.



4. THIS RECEPTACLE MATES WITH THE DT06-12SB-**** PLUG (**** = ALL MODIFICATIONS). CONSULT FACTORY FOR MODIFICATIONS.
3. FOR CONTACTS AND WIRE PERFORMANCE AND APPLICATION CHARACTERISTICS SEE ENVELOPE DRAWING 0425-015-0000 AND 0425-017-0000.
2. DIMENSIONS ARE ±.025[0.64] UNLESS OTHERWISE SPECIFIED.
1. DIMENSIONS ARE IN INCHES [MILLIMETERS].

NOTES:

CONTACT SIZE	MIN. INSUL O.D.	MAX. INSUL O.D.	WIRE RANGE [mm ²] REF ONLY
16	.088 [2.24]	.145 [3.68]	14-20 AWG [2.0-0.5]

SIGNATURE & DATE	
DR	D. SPENCER 02APR99
CHK	J. Spencer 12/9/01
PE	John Spencer 12/4/01
APPD	Spencer 12-4-01
SCALE	NONE WT

12 WAY RECEPTACLE
EXTRA KEY W/ CAP
-BE02 MOD.
-B- ARRANGEMENT
DT SERIES

ENVELOPE

CP	MATL CODE
	The Deutch Company DEUTSCH I.P.D. 3850 INDUSTRIAL AVE. HEMET, CALIF. 92545
B	DT04-12PB-BE02
DWG SIZE	CODE 11139 SHEET OF